



# FOAMit

EQUIPPED FOR CLEAN

## product catalog

foam

spray

gel

fog

mist

drain cleaning

chemical management



# why clean with foam?

foam provides significant, unique advantages over other cleaning methods. If you need to clean it, you need to FOAMit.

## Foam covers and clings

When cleaning, visual confirmation of application and dwell times are important to you. Foam provides both in spades.

Foam has excellent coverage on any surface that can be seen easily by personnel. You will have fewer “missed a spot” moments with foam clinging to the surface.

The clinging power of foam means chemistry stays where you put it for longer than non-foam methods. When you rinse away foam, you can be confident the surface is ready for the next step in your process.

For a complete clean, follow up foaming with a disinfectant with one of our spray units. We offer color coding to help you know at a glance which units are foam and which are spray (or mist, or gel, or fog).

Foam provides a superior clean across multiple industries from Food & Beverage to Institutional. FOAMit equips you to meet the cleaning challenges of tomorrow, today.



*belt foam bar at work*

## save money on labor and chemistry

Foam means a faster clean and less chemistry needed on surfaces. That translates to time, labor, and chemical savings for you. Check out our foam innovations like the **Belt Foam Bar** (pg. 20) and our **Doorway** defense units (pg. 8). Our product design team is always dreaming up new ways to foam.



portable power

## big or small, these units get it done

From the front facing drain and built in hose storage, to the quick-change pump and modular hinged back plate – our innovative air-powered portable units are designed to be easy to use and maintain.

Available in Foam, Spray, Gel, and Smart Foam configurations.



these units get the job done right,  
every time.

### 5 gallon ▶ (18.9 liter)

FI-5N – FOAM  
SP-5N – SPRAY  
GI-5N – GEL  
FI-5N-SM – SMART



### ◀ 10 gallon (37.6 liter)

FI-10N – FOAM  
SP-10N – SPRAY  
GI-10N – GEL  
FI-10N-SM – SMART



### 20 gallon ▶ (75.7 liter)

FI-20N – FOAM  
SP-20N – SPRAY  
GI-20N – GEL  
FI-20N-SM – SMART





◀ **25 gallon**  
**(94.6 liter)**

FI-25N – FOAM  
SP-25N – SPRAY  
GI-25N – GEL  
FI-25N-SM – SMART

**30 gallon** ▶  
**(113.6 liter)**

FI-30N – FOAM  
SP-30N – SPRAY  
GI-30N – GEL  
FI-30N-SM – SMART



◀ **50 gallon**  
**(189.3 liter)**

FI-50N – FOAM  
SP-50N – SPRAY  
GI-50N – GEL  
FI-50N-SM – SMART



## color code & configure

Build the best unit with options like pump seals and color coding. Order foam units in one color and spray units in another for easy identification. Foam, spray, gel, and smart foam units are fully configurable from 5 to 50 gallons.



*get to know these units  
starting with the FI-20N*



# let's concentrate

## not all concentrate units are created equal

The FOAMit wall mounted concentrate unit provides consistent and reliable dilution rates. We use a water regulator inside the unit to keep the dilution rate consistent, regardless of changes in the incoming water pressure.

Don't let your chemistry take the blame for problems that are caused by imprecise equipment. When consistent performance counts, choose a concentrate unit that can deliver.

### portable concentrate units

- labor & time savings – fewer trips to the chem room for refills
- holds two chemical jugs or one standard 5 gallon bucket (chemical jugs/bucket not included)
- designed for easy maintenance – modular hinged back plate, quick-change pump
- powered by compressed air
- dilutes at ratios of 14:1 to 320:1
- customization options –
  - pump seal material for compatibility
  - color coding – hose +/- lid
  - foam wand style – zero degree tip or fan tip
  - single or dual product pick up

**FI-CN-15N** – FOAM (pictured)

**SP-CN-15N** – SPRAY

**FISP-CN-15N** – dual function, FOAM + SPRAY



color jug options  
— page 22

## wall mounted concentrate units 🇩🇪

- powered by compressed air
- dilutes at ratios of 14:1 to 320:1
- requires water connection with 10-100 psi (0.69-6.9 bar) incoming water pressure
- anti-kink hose protection
- designed for easy maintenance – quick-change pump
- customization options available

**FI-WC** – FOAM (pictured)

**SP-WC** – SPRAY

**FISP-WC** – dual function FOAM + SPRAY



## wall mounted high concentration units 🇩🇪

- powered by compressed air
- dilutes at ratios of 1:1 to 16:1
- requires water connection with 10-100 psi (0.69-6.9 bar) incoming water pressure
- anti-kink hose protection
- all-poly fluid fittings – resistant to many acid products
- designed for easy maintenance – quick-change pump
- customization options available

**FI-WC-11AP** – FOAM

**FI-WC-11AP2** – FOAM with dual-product pick up (pictured)

**SP-WC-11AP** – SPRAY



# defend your doorways

## stop soil & cross contamination in your tracks

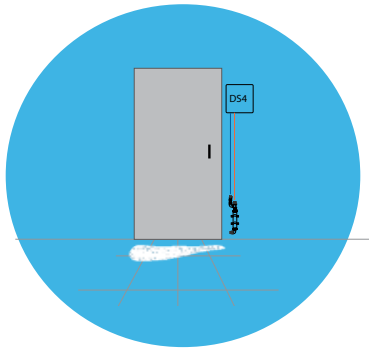
Busy wheels and boots track contaminants into sensitive locations without a proper shield. Protect your facility from unwanted hitchhikers with FOAMit's doorway defense.



Configurable to your specific doorway's needs (see nozzle illustrations below), our doorway units won't leave you open to cross contamination from floor traffic. Set the repeat cycle timer for foam where you need it at the right time, everytime.

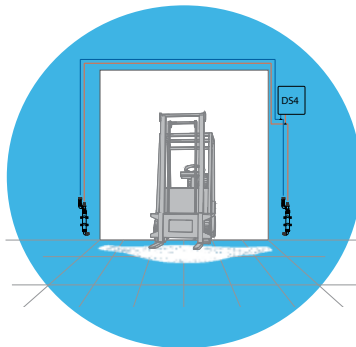
### one nozzle

- coverage area – up to 9 x 5 ft. (2.7 x 1.5 m)



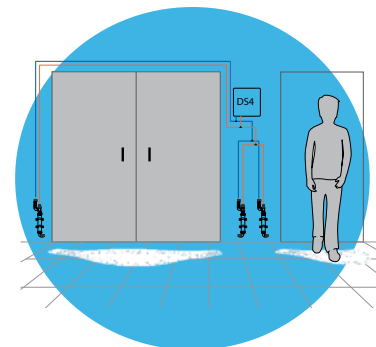
### two nozzles

- coverage area – up to 8 x 4 ft. (2.4 x 1.2 m) at each nozzle



### three nozzles

- coverage area – up to 6 x 3 ft. (1.8 x 0.9 m) at each nozzle



*defend all doors*



## twin-line concentrate foam unit

- water regulator provides consistent, reliable dilution rates, regardless of changes in water pressure
- powered by compressed air, electricity
- dilutes at ratios of 38:1 to 183:1
- repeat cycle timer
- up to 100 feet (30.5 meters) total distance between control box and nozzle(s)
- designed for easy maintenance – quick-change pump

**DS4** – FOAM, one nozzle assembly

**DS4-2** – FOAM, two nozzle assemblies (pictured)

**DS4-3** – FOAM, three nozzle assemblies



## Footwear sanitation systems

- low-moisture system – ideal for dry plants, moisture-controlled environments, and similar areas
- delivers a consistent amount of sanitizer per spray
- spray pattern ensures even coverage across shoe sole
- collection basin is easy to empty and clean
- powered by compressed air
- draws from pre-mixed solution

**SS2** – footwear sanitizing unit

**SS2-FMH** – footwear sanitizing unit with handle

**SS2-MBS** – footwear sanitizing unit with boot scrubber (pictured)

**SS3** – walk-through footwear sanitizing unit





# the pump-up family

## a great alternative to trigger sprayers

Try using our 0.4 gallon units instead of a trigger spray bottle. Our units have a wide application pattern to get the job done faster and a comfortable handle with trigger for quick on/off control.

Choose a SPRAY unit and spray at any angle, even upside down. Plus, twist the adjustable nozzle to change from stream to spray.

Or, choose a FOAM unit for long dwell times and visual confirmation of coverage. MIST units also available.



## 0.4 gallon (1.5 liter)

- view stripe – level markings in gallons and liters
- stable base and gripping notches for easy opening
- ergonomic thumb trigger
- Viton seals for chemical compatibility
- pressure relief valve for safety

**F1.5L** – FOAM, white tank  
**MU1.5L** – MIST, white tank  
**SP1.5L** – SPRAY, white tank

**F1.5LBK** – FOAM, black tank  
**MU1.5LBK** – MIST, black tank  
**SP1.5LBK** – SPRAY, black tank



### Additional features for SPRAY version only:

- adjustable nozzle – twist to change from stream to spray
- sprays at any angle, even upside down

## 1.3 & 2.6 gallon (5 & 10 liter)

You need great products so that anyone on your team can clean efficiently, effectively, and ergonomically, every time.

These units take on big jobs, easily.

- see-through tank with gallon and liter fill markings
- extra wide stability base
- Viton seals for chemical compatibility
- pressure relief valve for safety
- customization options –
  - choose **extendable wand** or **heavy duty trigger handle** (see examples on units below)



## 1.3 gallon (5 liter)

- F5.0L** – FOAM, extendable wand (pictured)
- SP5.0L** – SPRAY, extendable wand
- MU5.0L** – MIST, extendable wand
- F5.0L-PSG** – FOAM, heavy duty trigger handle
- SP5.0L-PSG** – SPRAY, heavy duty trigger handle



## 2.6 gallon (10 liter)

- F10.0L** – FOAM, extendable wand
- SP10.0L** – SPRAY, extendable wand
- MU10.0L** – MIST, extendable wand
- F10.0L-PSG** – FOAM, heavy duty trigger handle (pictured)
- SP10.0L-PSG** – SPRAY, heavy duty trigger handle (pictured: F10.0L-PSG)

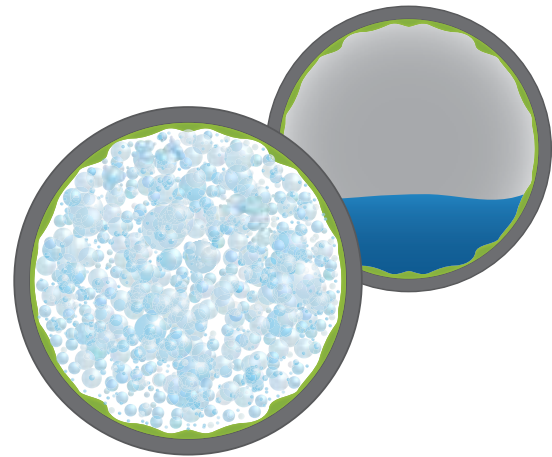
Our **manual pump-up units** are ideal for spot cleaning and other small projects, especially in areas without ready access to compressed air. Try them in situations where you might normally reach for a trigger spray bottle, or something a little larger.

# drain cleaning with FOAM

## 360° of clean

Drains can harbor pests, odors, and dangerous pathogens. Unlike liquid cleaners, foam expands inside pipes to contact the entire surface area – for 360° coverage.

Foam pushes through pipes, reaching deep into the plumbing network. Plus, foam breaks down slowly, giving your chemistry time to work.



### 0.75 inch (19 mm)

- for drains up to 0.75 inches (19 mm) in diameter
- ideal for beverage tower drains, tap lines, etc

**F1.5LBK-DP.75** – FOAM, black tank  
**F1.5L-DP.75** – FOAM, white tank

### 3.75 inch (9.5 cm)

- for drains up to 3.75 inches (9.5 cm) in diameter
- ideal for sink drains and overflow areas

**F1.5LBK-DP3.75** – FOAM, black tank  
**F1.5L-DP3.75** – FOAM, white tank

### 5 inch (12.7 cm)

- for drains up to 5 inches (12.7 cm) in diameter
- ergonomic extension wand
- ideal for shower drains, floor drains

**F5.0L-DF** – FOAM  
**F10.0L-DF** – FOAM  
**F100-DF** – FOAM



## round / square drains

- drain plug for drains 3.5 to 5 inches (8.9 to 12.7 cm) in diameter
- available in 48 and 36 inch heights
- gasketed cover for larger drains – choose round or square
  - round version – up to 12 inches (30.5 cm) in diameter
  - square version – up to 13 inches (33 cm) square
- compatible with FOAMit air or battery powered foam units
- quick-connect fittings – easily switch back and forth between drain foaming attachment and regular foam wand

**DFA** – FOAM, 48 inch height, round cover (pictured)

**DFA-SQ13** – FOAM, 48 inch, drain foaming attachment, square cover

**DFA-36** – FOAM, 36 inch, drain foaming attachment, round cover

**DFA-36- SQ13** – FOAM, 36inch, drain foaming attachment, square cover



## trench drains

- 7 inch (17.8 cm) round, flat brush head
- pushes foam through drain grate to fill trench and contact all interior surfaces
- compatible with FOAMit air or battery powered foam units
- quick-connect fittings – easily switch back and forth between drain foaming attachment and regular foam wand

**DFA-TR7**



**DFA-TR7** – trench drain foaming attachment (pictured)



**DFA**

Use with our **portable 15 gallon foam unit** and move from drain to drain without the hassle of air lines – see p. 22.





# central systems

## secure all chemicals centrally, save time, labor, and cost

Reduce complexity while saving labor and time. Central systems deliver ready-to-use solution throughout your facility, with only one place to titrate.

Our systems are highly customizable – mix and match drop station functions to get exactly what you need, where you need it.

Each central system is unique, designed for each facility’s layout and needs. Our tech experts can help you design a customized system for any facility, large or small.

### how it works:

keep all chemicals  
in a central, secure  
location

use compressed air  
and water to dilute  
the chemistry and  
pump it through  
the building

connect to drop  
stations for on-  
demand cleaning

complex operations  
require simple, elegant  
central system  
solutions

## proportioners

- turn concentrated chemical into ready-to-use solution
- different tank sizes and flow rates available

## foam / spray drop stations

- mix and match up to three separate functions per drop station – foam/spray, foam/foam, foam/spray/spray, etc.
- each function requires pre-mixed solution supplied by a properly sized header system
- foam functions require compressed air
- foam functions have wet/dry foam needle valve and solution volume control valve to dial in foam quality
- customization options –
  - color coding – hose

FI-STATION – FOAM

FI-STSAN – dual function FOAM + SPRAY

FI-STSANSEN – triple function FOAM + SPRAY + SPRAY

SP-WALL – SPRAY

## pumps

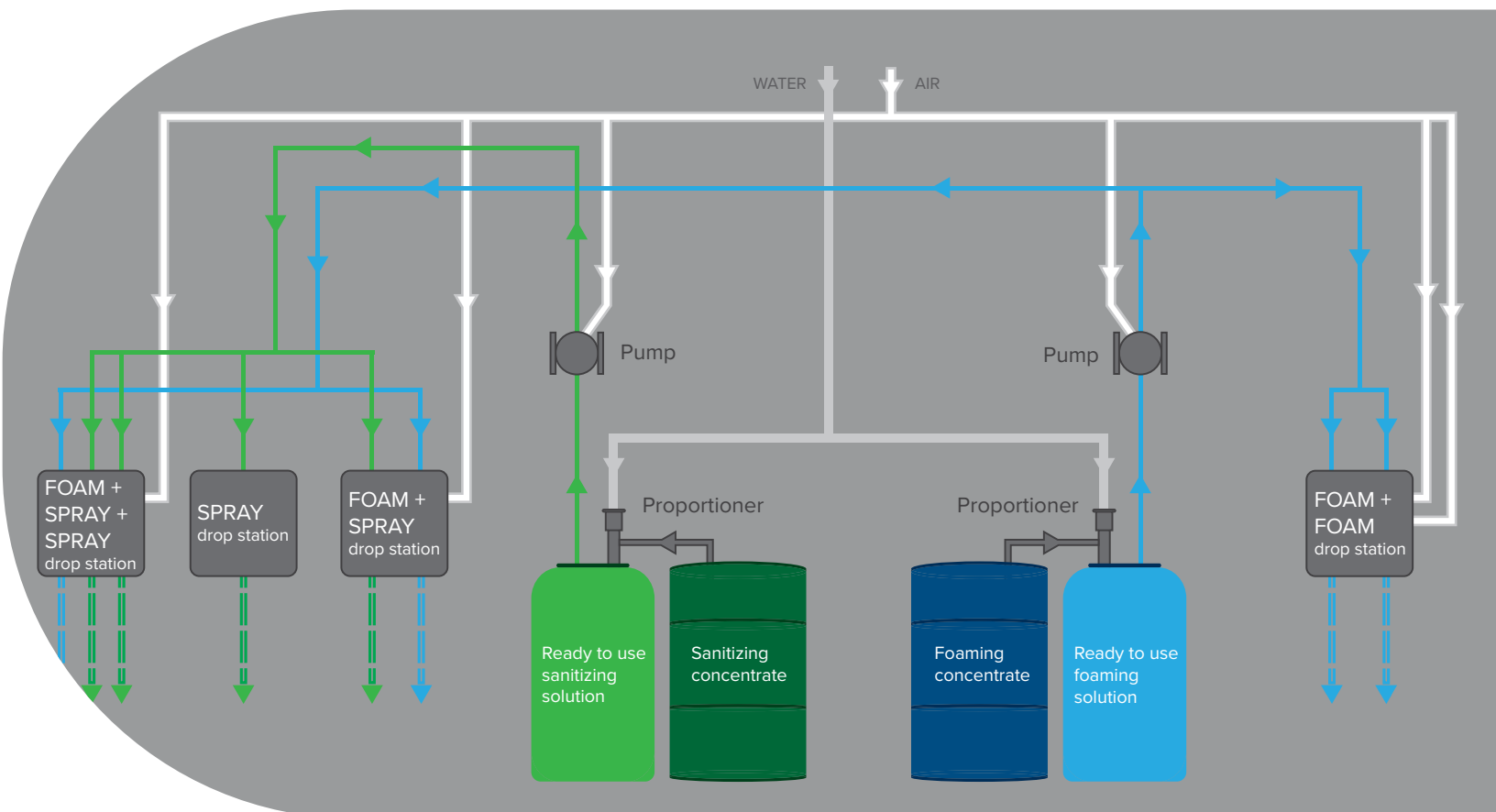
- distribute solution to drop stations throughout your facility
- choose pump capacity based on usage and chemistry

## doorway foam drop stations

- each doorway drop station supports multiple nozzles
- requires pre-mixed solution supplied by a properly sized header system
- requires compressed air
- wet/dry foam needle valve and solution volume control valve to dial in foam quality
- repeat cycle timer – control on/off time independently at each drop station
- operating voltage options 120 VAC or 24 VAC

GK5T – DOORWAY FOAM drop station

GK7T – DOORWAY FOAM nozzle assembly



Clean & sanitize small to medium spaces with the water-driven Nommo. Three functions in one unit save space and simplify the sanitation process.

## Nilfisk FOOD | Nommo foam/rinse/sanitize unit

### Nilfisk **FOOD**

- powered by water – requires 29-80 PSI (2-6 bar) incoming water pressure
- draws from two concentrated products, one at a time
- spray or foam – switch function by swapping nozzles
- patented Tornado rinse/spray nozzle – high-impact output with 20% less water
- Top Jet foam nozzle – creates visible, wet foam without compressed air
- simple installation & operation

**NF-NOMMO** – FOAM / RINSE / SPRAY



# FOOD

Designed for institutional kitchens, food retail production environments, and spaces with similar sanitation needs.



## Nilfisk FOOD | Griff foam/rinse/sanitize unit

### Nilfisk **FOOD**

- powered by water and electricity – requires 29-72 PSI (2-5 bar) incoming water pressure
- built in booster pump – 123 psi (8 bar) rinse pressure
- built in air compressor – high-quality air-assisted foam
- draws from two concentrated products, one at a time
- patented Tornado rinse/spray nozzle – high-impact output with 20% less water
- 20 minute max. continuous run time in foam mode
- optional mobile cart configuration gives added flexibility & range

**NF-GRIF-FWM** – FOAM / RINSE / SPRAY, wall mounted

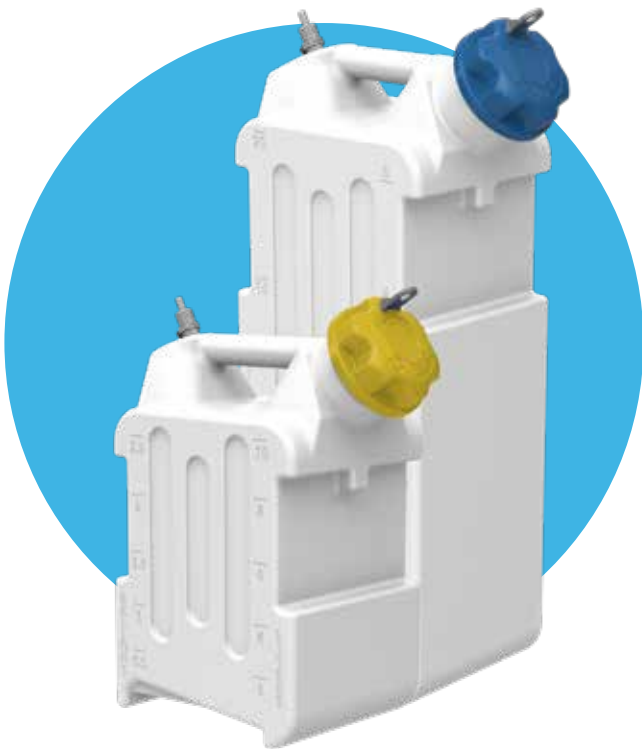
**NF-GRIF-FCRT** – FOAM / RINSE / SPRAY, mobile cart



# chemical management

## secure, store, & transfer chemicals

### chemical jugs with locking caps



- durable, reusable polyethylene jug is built to last
- see-through jug body with level markings in gallons and liters
- includes our locking cap with NPS threads – see features below
- optional stainless steel rack, designed for easy cleaning
- optional integrated suction fittings for 1/4 in. I.D. hose, with draw tube for chemical pickup
- jug body is not compatible with locking cap with buttress threads or with non-locking chemical jug cap
- customization options –
  - color coding – cap
  - size – 2.5 or 5 gallon (9.5 or 18.9 liters)
  - optional stainless steel rack
  - optional integrated suction fittings

**J2.5LIYLS** – 2.5 gallon jug with yellow locking cap (pictured)  
**J5LIBLS** – 5 gallon jug with blue locking cap (pictured)

### locking caps

- durable, corrosion-resistant polypropylene, polyethylene, and stainless steel construction
- tamper-resistant – designed to withstand attempts to force open with other tools
- metal-detectable universal key with hole for lanyard or keychain
- optional fitting for suction line – maintain security while accessing chemical
- available in 2 in. male NPS or 2 in. male buttress thread
- customization options available



**LI-BT** – locking cap, buttress thread, white  
**LI-FT** – locking cap, NPS thread, white  
**LI-FTS-YL** – locking cap, NPS thread, suction fitting, yellow

## chemical transfer unit for up to 4 products

- transfer each product at up to 3.5 gal/min (13.2 l/min)
- tool-free pump changes with our quick-change pump bracket
- transparent, chemically-resistant PVC hose
- weighted suction line with filter and check valve
- air regulator with filter
- strain relief on the discharge hose
- trigger gun with Hastelloy components for compatibility
- air-operated diaphragm pump with quick-release hose barbs
- customization options –
  - number of pumps
  - pump seal material for chemical compatibility
  - color coding – wand – 4 colors (BL, GN, YL, RD)

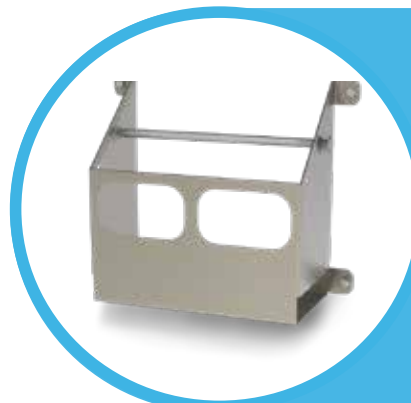
CTX1 – 1 product (pictured)  
CTX4 – 4 products (pictured)

## non-locking chemical jugs

- durable, reusable polyethylene jug is built to last
- see-through jug body with level markings in gallons and liters
- retention chain to prevent lost or mismatched jug caps
- optional stainless steel rack, designed for easy cleaning
- optional integrated suction fittings for 1/4 in. I.D. hose, with draw tube for chemical pickup
- one-way vent included on jugs with suction fittings to prevent vapors and leaks
- customization options available

J2.5BKSR – 2.5 gallon jug with suction fittings, rack (pictured)

J5BKS – 5 gallon jug with suction fittings (pictured)



**we have  
racks &  
stands**



order jugs and caps in any color combination that works best for your chemical management system.

# the belt foam bar

save time, labor,  
& chemical

## belt foam bar

- greater coverage faster
- foam equals reduced chemical and water consumption
- contact time of foam on the belt contributes to soil breakdown
- complete coverage on a belt revolution
- belt foam bars make belt cleaning quicker and more affordable
- easy-mount bracket to conveyor
- can clean the surface and inside a belt
- can be used as part of the Clean-in-Place process

**how to order** – contact your sales representative for details

workers don't  
need to hose  
down lines  
anymore



# mist & fog family

## 15 gallon electric unit (56.8 liter)

- draws from pre-mixed solution
- powered by electricity (120 VAC)
- handheld wand with 25 ft. (7.6 m) coiled discharge hose
- see through tank – 15 gallon (56.8 liter) capacity
- built in air compressor
- hinged back plate provides tool-free access to components
- in-line strainer to protect pump from debris
- customization options available

**MU-AC-15N-PSGN130** – MIST

## 10 gallon units (37.9 liter)

- powered by compressed air
- draws from pre-mixed solution
- run time from full tank:
  - with two nozzles: approx. 1.5 hours
  - with three nozzles: approx. 1 hour
- droplet size: 15 microns at 50 psi (3.4 bar)
- polypropylene and Kynar nozzle construction
- in-line strainer to protect pump
- designed for easy maintenance – modular hinged back plate, quick-change pump
- customization options available

**FG-10N-2** – FOG, two nozzles on unit handle (timer unit pictured)

**FG-10N-3** – FOG, three nozzles on telescoping mast





# portable power



## portable 15 gallon foam unit (56.8 liter)

- outputs a thin layer of clinging foam
- draws from pre-mixed solution
- powered by electricity (120 VAC)
- handheld wand with 25 ft. (7.6 m) coiled discharge hose
- quick-change pump
- built in air compressor
- 7 color lid coding options (BK, BL, GN, YL, RD, PL, OR)

F1-AC-15N – FOAM



Use with our **drain attachments** and move from drain to drain without the hassle of air lines – see p. 13.

## 2.6 gallon dual-power unit (10 liter)

- dual-power – pressurize using compressed air or manually pump
- run connected to air line, or pressurize then disconnect to use
- air-assisted foam quality / spray pressure

F100 – FOAM  
SP100 – SPRAY

